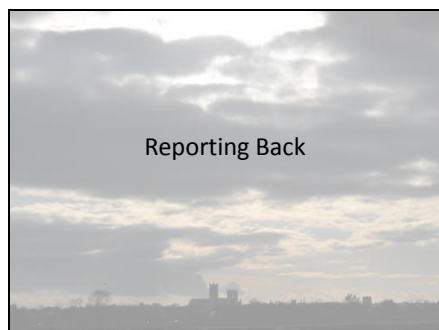


# Reporting back

---

This presentation was given at Nettleham Methodist Church on Tuesday 8<sup>th</sup> August at 7:30 pm, following the release to the circuit of my report on the mission of the Churches and the Circuit.

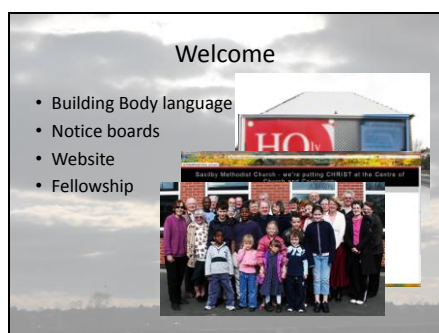
The presentation highlights the good practice elements of the Churches that are growing and are effective in mission and concludes with some recommendations on for the Circuit to enable and initiate mission.



The report has two parts.

The slides 2-6 are looking at the positive features of the Churches in the circuit that are growing. These features fall into the key elements of 'Cell Church'. I.e. Welcome, Worship, Word and Witness. The 5<sup>th</sup> slide looks at Buildings.

Slides 7 and 8 look at the Circuit and ideas for mission strategy.



**Building Body Language** – Church buildings that create a sense of welcome, tidy, well maintained. Says a lot about the Church.

**Notice boards**- that are well used, with attractive, thought provoking (humorous) messages, up to date information.

**Website** -designed with attention to the needs of visitors to the site, particularly non Christians, mindful of language used

**Fellowship** – actively gracious accepting loving communities that seek to befriend people.



**Accessible** –the language and the approach to worship that enables people to engage in worship.

**Inclusive** – more than accommodating the needs of disabled, vision and hearing impaired. To have true 'Every Member ministry' requires full inclusion into the life and mission of the Church of every member.


**Relevant** – the issues of real life, communicated in a way relevant in today's world.

**Appropriate use of technology** – the aim is for technology to become 'invisible' as it facilitates worship and not used simply for the sake of it.

**Prayer** – a key element of the life of a growing Church.

**Word**  
John 8:31-32

- Attention to the Word
- Thoughtful exploration and application
- Incarnation
- Proclamation



**Attention** – an Intention of attention to the Word of God, an expectation that God speaks today through the Scriptures to us.


**Thoughtful Exploration and application** – an active and intentional exploration of the Scriptures, seeking application for the life of individuals, communities and the Church.

**Incarnation** – lives and Church community shaped by the Scriptures by the Holy Spirit

**Proclamation** – The message of the Church shaped by the scriptures and thoughtfully communicated to the wider community.

**Witness**

- Show and Tell
- Personal and Corporate ministry
- Overt and covert mission
- Getting beyond the Bubble (making Friends)



**Show and Tell** – lives that demonstrate the truth of the faith.

**Personal and corporate ministry** – recognising the need for individuals and the Church to be active in living and sharing the faith in word and deed.

**Overt and covert mission** – recognising that the mission of growing Churches have both specific intention in mission and sometimes it is simply the actions of the people of faith doing what seems natural.

**Getting beyond the Bubble (making Friends)** – recognising that growing Churches draw in people from the friendships and relationships that the Church members make in the course of their life beyond the walls of the building.

**Buildings**

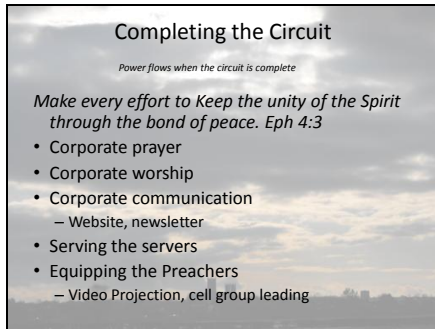
- Millstone or mission?
- Development?
- Own or sell and rent?



**Millstone or mission** -Churches that are growing have a healthy attitude towards buildings.

**Development?** – Some Churches have modified their buildings to enable the mission of the Church with good effect.

**Own or sell and rent?** – One Church doesn't have a building and is able to give more attention to the life and mission of the Church unhampered by the issues created by buildings. Selling can release the Church to focus on the mission, renting space to use for worship and mission does bring some logistic problems but can enable the Church to be where it needs to be with the space it needs.



Elements that I think need to be addressed to enable the circuit to function more effectively for mission.

**Corporate prayer meeting** – once a month, praying for every Church, leadership, missions, etc

**Corporate Worship** – every month in different Churches

**Corporate communication** – every quarter with the plan, key information for the life of the Circuit

**Serving the servers** – is about making sure that every month those in leadership get fed spiritually by somebody else.

**Equipping the Preachers** – making sure that the Preachers and leaders get training for the work they are doing.



Some thoughts on strategic development

**Cell** – small Churches should adopt a 'Cell' approach for Sunday worship to include the key elements of the growing Churches. Could be led by experienced Cell group leaders and reduce the pressure on Local Preachers.

**Merging** – Specifically there are two Churches that should consider merging – both are in danger of closing.

**Partnerships** – Successful Churches partnering with another that is in need of a 'jump start' (skills and leadership) to get them growing.

**Grouping for mission** – structuring the circuit into three groups to encourage working together. Could also form a way of covering the pastoral care of all and helping release ministers for mission.

**Wide area Impact** – The need to think of ways by which the whole area can be impacted with the Gospel by finding the wide area community hubs to centre mission. E.g. God Pod in the Shopping Centres in Lincoln. Also looking at working with wider Christian community for some central mission.